



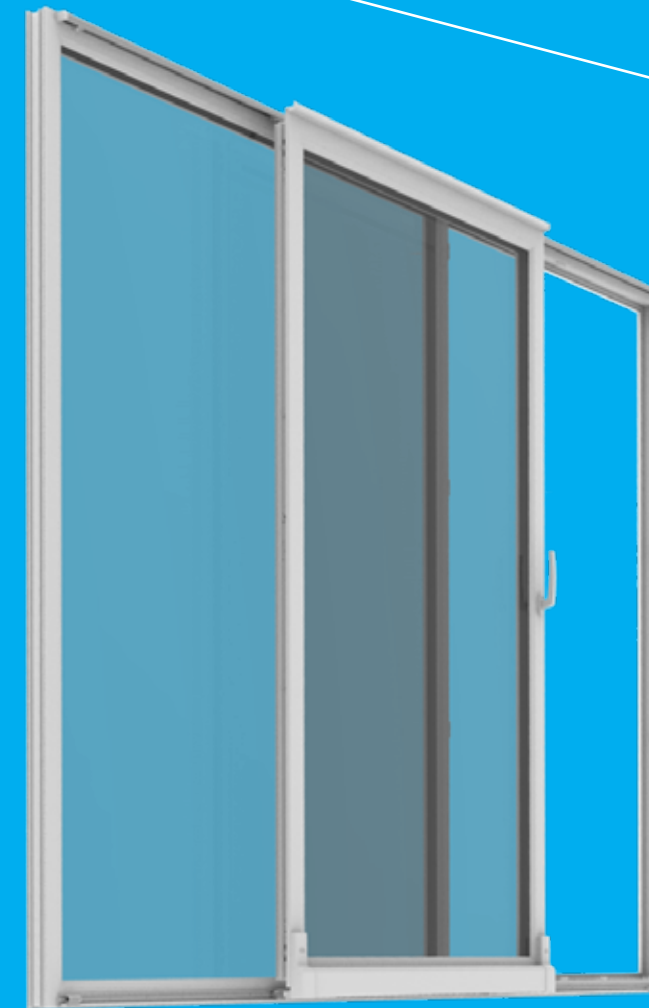
Parallel Tilt&Slide System  
Aesthetic Solutions with Strong Insulation



WINDOW & DOOR SYSTEMS







## Aesthetic Design that gives space to your life

Vorne Parallel Tilt&Slide system that designed for using in wider spaces like Balcony, Terrace and Garden exits saves important space in places with its developed features.

Parallel Tilt&Slide system provides long usage life products to all users and covenant better life quality for all family like all high standart and technology based products that are presented by Vorne



## Safer Living Spaces

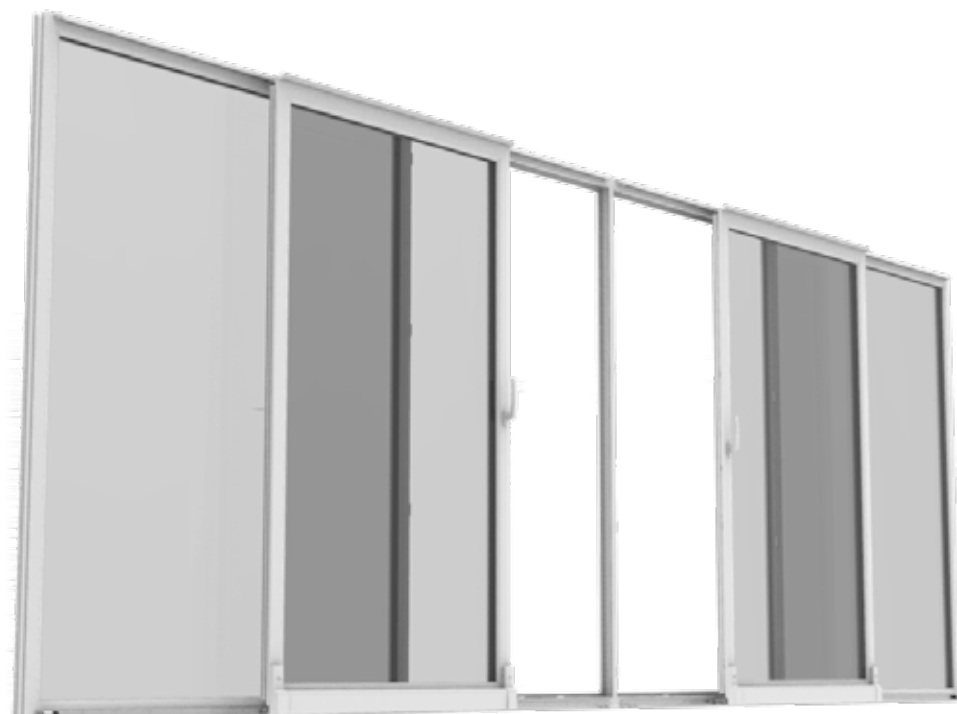
Vorne Parallel Tilt&Slide System has design and equipment to improve the safety of the sash in tilting and sliding position. The system offers users a superior safety advantage even when used with standard pins, as well as extra security for you and your family with windows and doors equipped with security pins. In addition to this, thanks to the special design and structure of the stay mechanism in the system, the system provides complete security against the thieves even in the ventilation position.



## Easy Usage

Thanks to its special design wheels and bogie set, the system offers the comfort to be easily moved with one hand. The Vorne Parallel Tilt&Slide System can easily sliding and effortlessly closed without vibrating or shaking in weights up to 130 kg.

Profiles that you are choosing according to place and your taste RAL 9016 white, RAL 8022 brown, silver, RAL 9005 black or RAL 1013 cream color options in the Vorne Parallel Tilt&Slide system offer a unique alternative to the original decoration ideas.



## Fast Assembly

For the experts who assembly the products Vorne Tilt&Slide system's components are designed as a compact. Thanks to the advantages of the system, your windows and doors can be easily and quickly assembled. Therefore, thanks to Vorne's advanced technology products, the installation takes place much faster than the standard time. This saves time and minimizes labor costs.

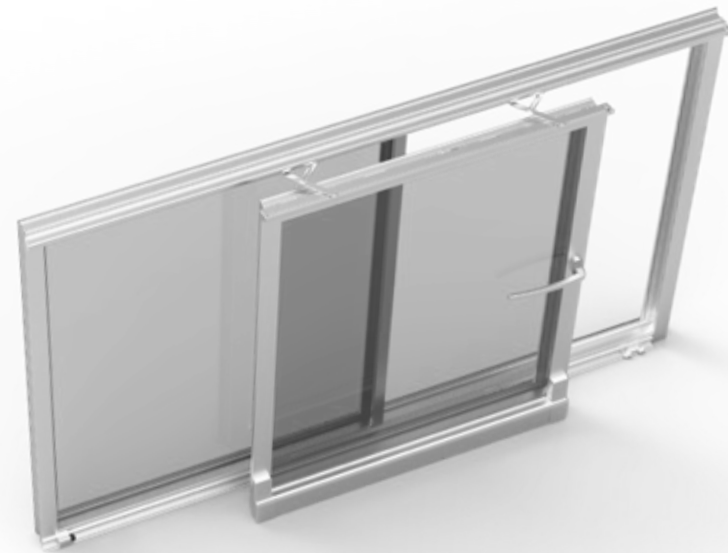




## Parallel Tilt&Slide Aluminium Application

“Vorne Parallel Tilt&Slide System is designed in accordance with the different profiles. For those who keep elegance and ruggedness from the foreground Now it's easy to reach the living space with the PTS sliding hardware that are suitable with aluminium profile.

Parallel Tilt & Slide System hardware are working in all applications that has 12mm rebate clearance, 18-20mm sahs overlap and 9-13 axis.



## Parallel Tilt&Slide Timber Application

Timber profiles which acts as a kind of moisture regulator by dominating the humidity in the room, is characterized by its healthy nature. Designed for those who cannot give up naturalness, the Vorne Parallel Tilt&Slide System helps to reduce heating by providing thermal insulation thanks to air-filled cells.

Parallel Tilt & Slide System hardware are working in all applications that has 12mm rebate clearance, 18-20mm sahs overlap and 9-13 axis.



## Twice spaciousness, Wider viewing angle

Vorne Parallel Tilt&Slide System with Double sash gives your places a bigger space and provides a more spacious view. The system, which is applied up to a width of 3,200 mm, provides maximum visibility at all times in areas which are opening to outside such as balconies and gardens along with saving space.



## Further On with Parallel Tilt&Slide System

Vorne, which does not make concessions on its quality and takes the task of following the world standards most closely, continues its product development works with full speed and success in order to offer you the best quality products. Promising to carry the convenience and comfort of your life in the most stylish and spacious way, the Vorne Parallel Tilt&Slide System is now approved by the IFT Rosenheim Quality Standards.

The quality of Vorne registered with a certificate of PDS system by the IFT Rosenheim, the German Quality Standards Certification Authority recognized and acknowledged by the whole world. At the test stage, which was rated as 10, 15 and 25 thousand cycles, the product easily passed 25 thousand tilting and sliding attempts. Vorne, who does not make concessions on its quality and has the duty to follow the world standards closely at all times, always carefully, always with confidence

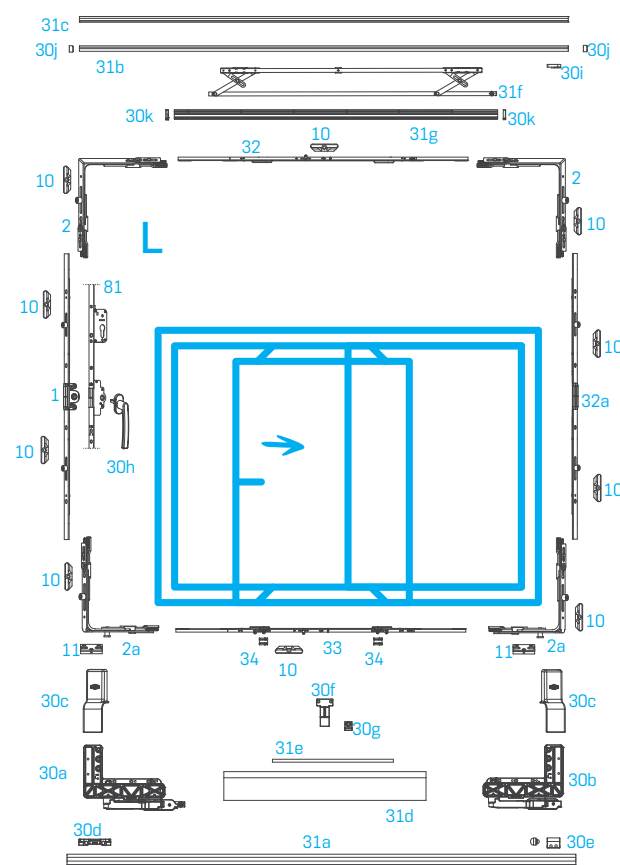
Zertifikat / Certificate		ift ROSENHEIM
Zertifikatsnr. / Certificate No.: 228PSK-8019794-1-1		
<b>Beschläge für Kippschiebe-Fenster und Fenstertüren</b> <i>hardware for lift and slide windows and balcony door</i>		
<b>Produkt</b> <i>product</i> <b>max. Flügelgewicht</b> <i>max. wing weight</i> <b>Einsatzbereich</b> <i>field of application</i> <b>Hersteller</b> <i>manufacturer</i> <b>Produktionsstandort</b> <i>production site</i>	<b>Tilt and slide window</b> <b>130 kg</b> <b>Systeme mit entsprechender Beschlagsaufnahme</b> <i>systems with suitable hardware groove</i> <b>Ileri Pencere Kapi Sistemleri San. ve Tic. Anonim Sirketi</b> <i>Arsak Sanayi Bölgesi Öncel Mah. Hakkı İren Cad. No:72, TR 34555 Hüdudkeş-İstanbul</i> <b>Ileri Pencere Kapi Sistemleri San. ve Tic. Anonim Sirketi</b> <i>Arsak Sanayi Bölgesi Öncel Mah. Hakkı İren Cad. No:72, TR 34555 Hüdudkeş-İstanbul</i>	<b>Grundlage(n) / Basis</b> <b>ift-Zertifizierungsprogramm für Beschläge</b> <i>ift certification scheme for hardware</i> <b>EN 1191</b> <b>EN 12402</b> <b>Klasse 3</b> <b>Dauerfunktion</b> <i>resistance to opening and closing</i> <b>EN 12046-1</b> <b>EN 13115</b> <b>Klasse 1</b> <b>Bedienungskraft</b> <i>operating force</i> <b>EN ISO 9227</b> <b>EN 1070</b> <b>Klasse 4</b> <b>Korrosionsschutz</b> <i>corrosion protection</i>
<p>Mit diesem Zertifikat wird bescheinigt, dass das benannte Bauprodukt den Anforderungen des zugrundeliegenden ift-Zertifizierungsprogramms in der aktuellen Fassung entspricht.</p> <p>Das Zertifikat darf nur unverändert veröffentlicht werden. Alle Änderungen der Voraussetzungen für die Zertifizierung sind dem ift-Zert mit dem erforderlichen Nachweisen unverzüglich schriftlich anzuzeigen.</p> <p>Das Unternehmen ist berechtigt, das benannte Bauprodukt gemäß der ift-Zertifizierung mit dem „ift-certified“-Zeichen zu kennzeichnen.</p> <p>Dieses Zertifikat enthält 2 Anlagen.</p>		
<p>This certificate attests that the building product mentioned fulfills the requirements of the underlying ift-certification scheme in its current version.</p> <p>completion of product families of the building product listed and initial type-testing by an accredited testing body as per EN 12156-1:2008 and EN 1191:2013 based on the application diagrams</p> <p>implementation and maintenance of a factory production control by the manufacturer</p> <p>initial inspection of the production site and the factory production control by ift-G-Zert</p> <p>continuous third-party control of the production site and the factory production control by ift-G-Zert</p> <p>This certificate was first issued on 03. Dezember 2018 and will remain valid for 5 years, as long as neither the conditions laid down in the technical specification listed above nor the manufacturing conditions in the production site nor the factory production control itself are modified significantly.</p> <p>The reproduction of the certificate without any change from the original is permitted. Any changes to the prerequisites applicable to certification shall be immediately communicated in writing to ift-G-Zert accompanied by the necessary evidence.</p> <p>The company is authorized to affix the "ift-certified"-mark to the building product mentioned according to the ift-rules for use of the "ift-certified"-mark.</p>		
<b>ift Rosenheim</b> <b>03. Dezember 2018</b> <b>Gültig bis / Valid until</b> <b>Vertragssprache / Contracting language</b>	<b>Christian Kehr</b> <b>Leiter der ift-Zertifizierung</b> <i>Head of ift Certification</i> <b>02. Dezember 2023</b> <b>228PSK-8019794</b>	<b>ift</b> <b>ROSENHEIM</b> <b>228PSK-8019794</b> <b>www.ift-rosenheim.de</b>



# PVC - Single Sash Application

Range of Use	
Sash Rectangular Width	600 - 1600 mm
Sash Rectangular Height	700 - 2400 mm
Sash Weight	max. 130 kg

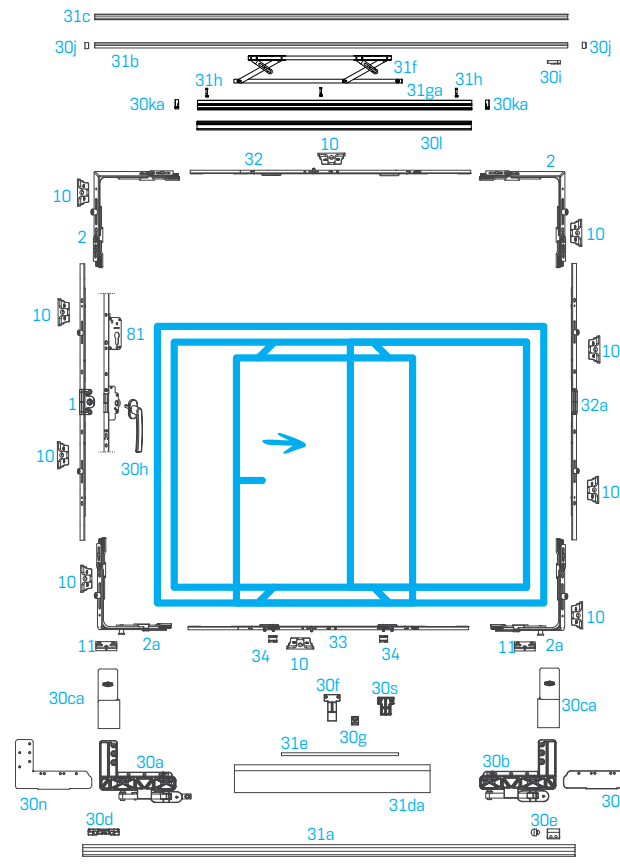
- 1 T&T Gear
- 2 Corner Slider
- 2a Corner Slider (Security Cam)
- 10 Striker
- 11 Security Cam Striker
- 30a PTS Master Bogie
- 30b PTS Slave Bogie
- 30c PTS Bogie Covers
- 30d Guide Block
- 30e Buffer For Bottom Rail
- 30f Cover Fillet Support
- 30g Support Block
- 30h PTS Handle
- 30i Buffer For Top
- 30j Cover Caps for Guiding Rail
- 30k Covers for Guiding Stay
- 31a Running Rail
- 31b Guiding Rail
- 31c Screw Cover Profile
- 31d Cover Profile
- 31e Connection Rod
- 31f PS Stay System
- 31g Guiding Stay Rail
- 32 Connection Gear (Horizontal)
- 32a Connection Gear (Vertical)
- 33 PTS Automatic Gear
- 34 PTS Horizontal Tilt Striker Plate
- 81 Tilt&Turn Lockable Gear



# Aluminium Application

Range of Use	
Sash Rectangular Width	600 - 1600 mm
Sash Rectangular Height	700 - 2400 mm
Sash Weight	max. 130 kg

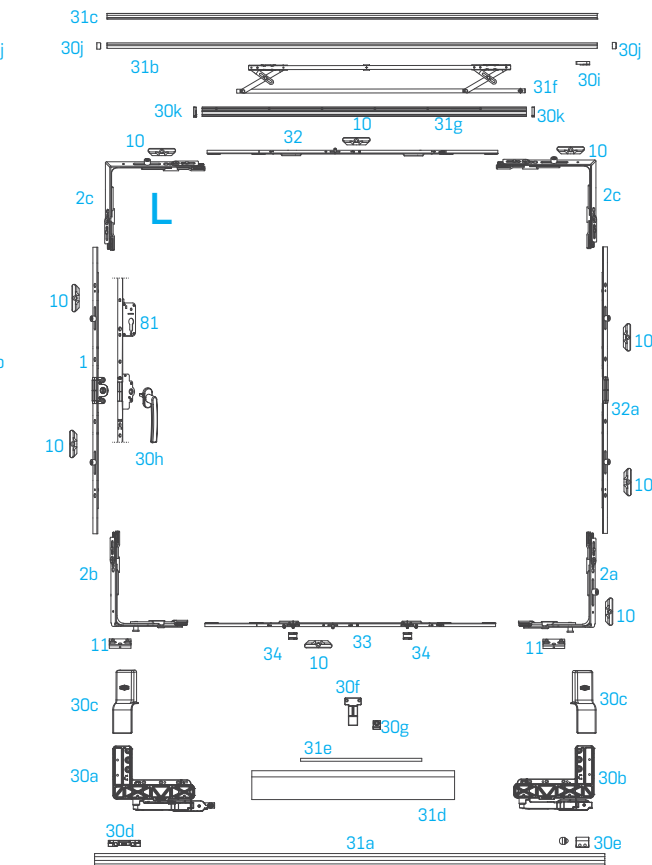
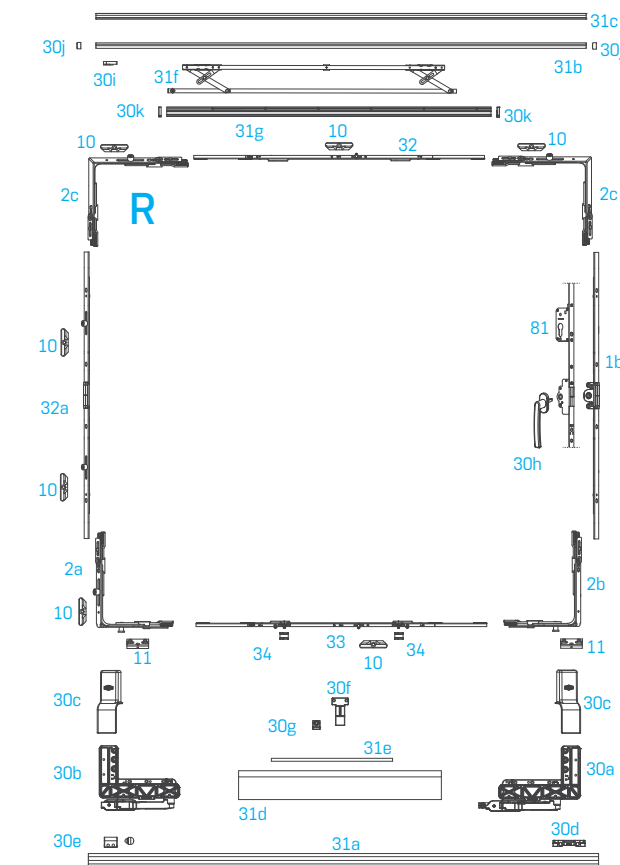
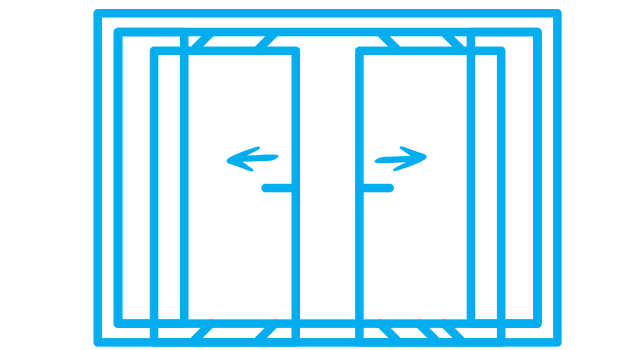
- 1 T&T Gear
- 2 Corner Slider
- 2a Corner Slider (Security Cam)
- 10 Striker
- 11 Security Cam Striker
- 30a PTS Master Bogie
- 30b PTS Slave Bogie
- 30ca PTS Bogie Covers
- 30d Guide Block
- 30e Buffer For Bottom Rail
- 30f Cover Fillet Support
- 30g Support Block
- 30h PTS Handle
- 30i Buffer For Top
- 30j Cover Caps for Guiding Rail
- 30ka Covers for Guiding Stay (Aluminium)
- 30l Stay Guide Profile Cover
- 30n Bogie Support Packer (Aluminium)
- 30s Support Block (Aluminium)
- 31a Running Rail
- 31b Guiding Rail
- 31c Screw Cover Profile
- 31da Cover Profile (Aluminium)
- 31e Connection Rod
- 31f PS Stay System
- 31ga Guiding Stay Rail (Aluminium)
- 31h Screw Set (Aluminium)
- 32 Connection Gear (Horizontal)
- 32a Connection Gear (Vertical)
- 33 PTS Automatic Gear
- 34 PTS Horizontal Tilt Striker Plate
- 81 Tilt&Turn Lockable Gear



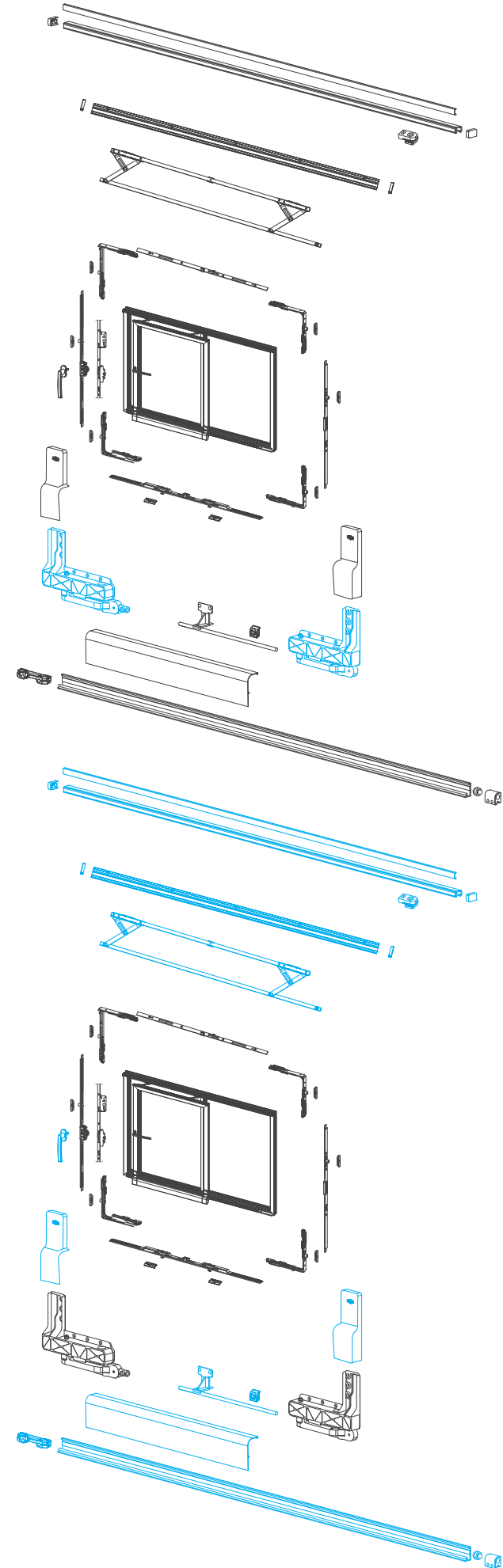
# PVC - Double Sash Application

Range of Use	
Sash Rectangular Width	600 - 1600 mm
Sash Rectangular Height	700 - 2400 mm
Sash Weight	max. 130 kg

- 1 T&T Gear
- 1b T&T Gear (Without Pim)
- 2a Corner Slider (Security Cam)
- 2b Corner Slider (Security Cam)
- 2c Corner Slider
- 10 Striker
- 11 Security Cam Striker
- 30a PTS Master Bogie
- 30b PTS Slave Bogie
- 30c PTS Bogie Covers
- 30d Guide Block
- 30e Buffer For Bottom Rail
- 30f Buffer For Bottom Rail
- 30g Support Block
- 30h PTS Handle
- 30i Buffer For Top
- 30j Cover Caps for Guiding Rail
- 30k Covers for Guiding Stay
- 31a Running Rail
- 31b Guiding Rail
- 31c Screw Cover Profile
- 31d Cover Profile
- 31e Connection Rod
- 31f PS Stay System
- 31g Guiding Stay Rail
- 32 Connection Gear (Horizontal)
- 32a Connection Gear (Vertical)
- 33 PTS Automatic Gear
- 34 PTS Horizontal Tilt Striker Plate
- 81 Tilt&Turn Lockable Gear



## Parallel Tilt&Slide Set and Content



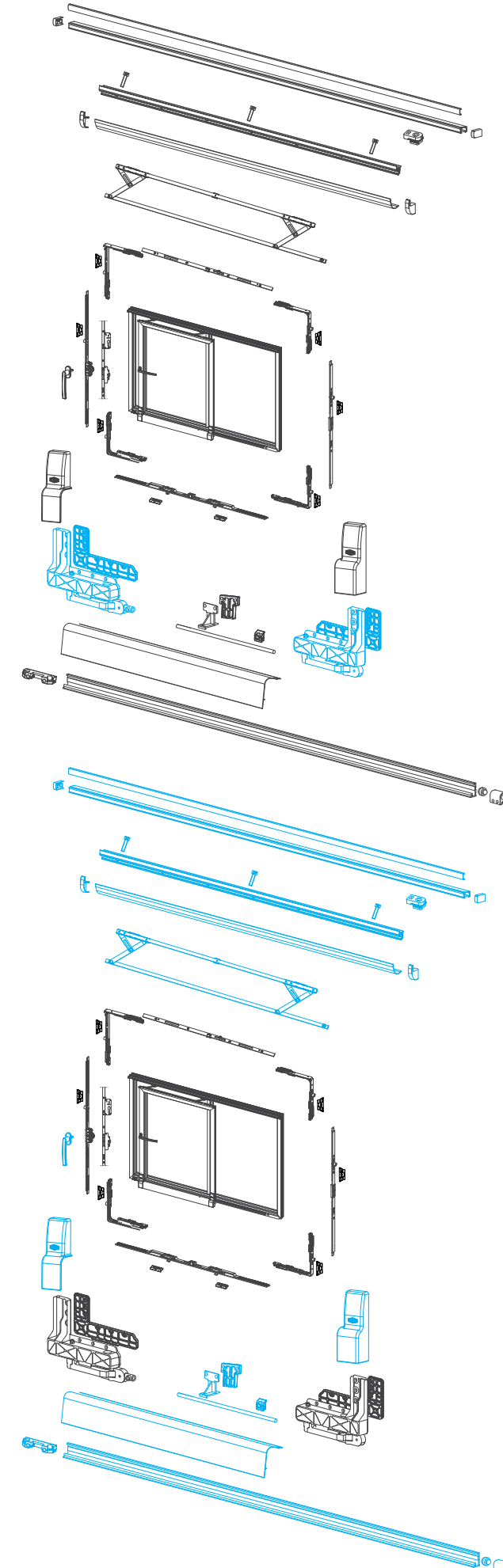
### Set 1 Content (PVC)

- 1 piece Master Bogie
- 1 piece Slave Bogie

### Set 2 Content (PVC)

- 1 Set L/R Bogie Covers
- 1 piece Guide Block
- 1 piece Buffer For Bottom Rail
- 1 piece Cover Fillet Support
- 1 piece Support Block
- 1 piece Buffer For Top
- 2 piece Cover Caps for Guiding Rail
- 1 Set L/R Covers for Guiding Stay
- 1 piece Running Rail
- 1 piece Guiding Rail
- 1 piece Screw Cover Profile
- 1 piece Cover Profile
- 1 piece Connection Rod
- 1 piece Stay System
- 1 piece Guiding Stay Rail
- 1 piece Handle

## Paralel Devirmeli Sürme Alüminyum Uygulama



### Set 1 Content (Aluminium)

- 1 piece Master Bogie
- 1 piece Slave Bogie
- 1 Set L/R Bogie Support Packer

### Set 2 Content (Aluminium)

- 1 Set L/R Bogie Support Packer (Aluminium)
- 1 piece Guide Block
- 1 piece Buffer For Bottom Rail
- 1 piece Cover Fillet Support
- 1 piece Cover Fillet Support
- 1 piece Support Block
- 1 piece Buffer For Top
- 2 piece Cover Caps for Guiding Rail
- 1 Set L/R Covers for Guiding Stay (Aluminium)
- 1 Set L/R Stay Guide Profile Cover (Aluminium)
- 1 piece Bogie Support Packer (Aluminium)
- 1 piece Support Block (Aluminium)
- 1 piece Running Rail
- 1 piece Guiding Rail
- 1 piece Screw Cover Profile
- 1 piece Cover Profile
- 1 piece Connection Rod
- 1 piece PS Stay System
- 1 piece Guiding Stay Rail (Aluminium)
- 4 piece Screw Set (Aluminium)
- 1 piece Handle

BE ON THE **SAFE SIDE**



WINDOW & DOOR SYSTEMS